

# Photometric Report

VDO Atomic Bold – Beam - 60 Deg Diffuser

MARTIN PROFESSIONAL R&D OPTICAL LABORATORY

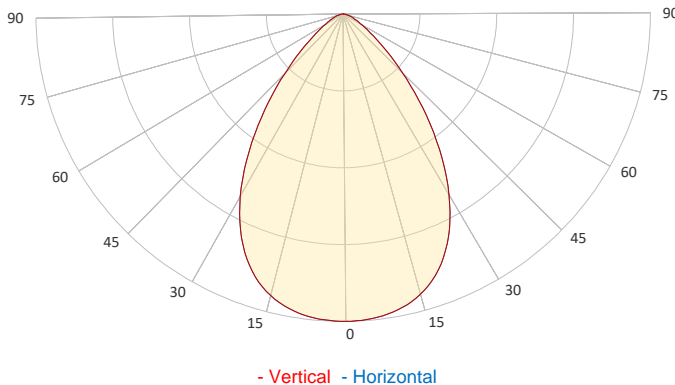
## GENERAL SPECIFICATIONS

Total Fixture Output:	8000 lm
Light Engine Output:	8700 lm
Efficacy:	38 lm/W
Lens Option:	N/A
Beam Angle (50%):	73°
Field Angle (10%):	112°
Cut-off Angle (3%):	146°
CRI:	83
CQS:	87
TM-30 Rf:	83
TM-30 Rg:	106
TLCI:	85
Color Temperature:	2,000-11,000 K



## SAMPLE MEASUREMENT

POLAR PLOT

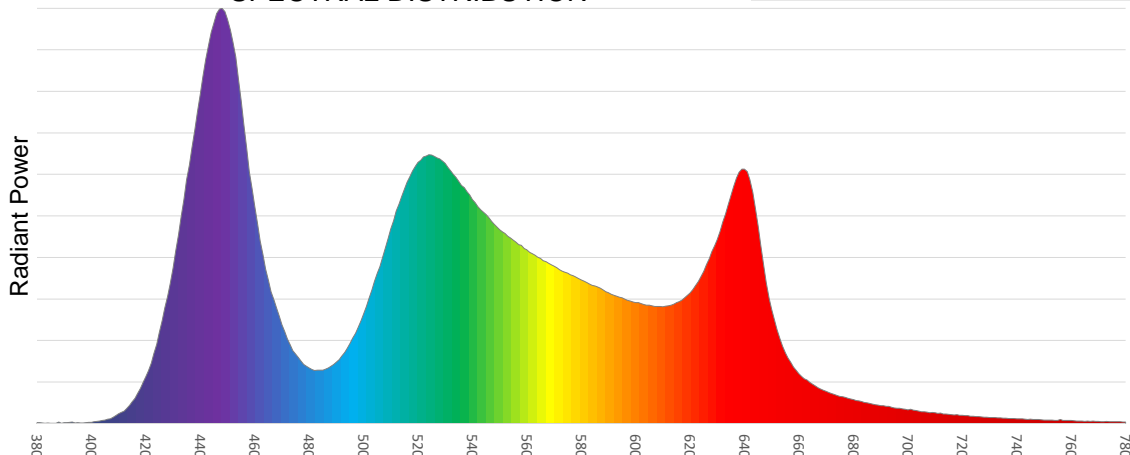


Catalog Number:	MAR-90357703
Measured Output:	7351 lm
Measured Peak:	5044 cd
Consumed Power:	208 W
Efficacy:	35.3 lm/W

Beam Angle (50%):	72.9°
Field Angle (10%):	111.9°
Cut-off Angle (3%):	145.5°

Measurement Condition:	
Ambient Temperature:	25° +/- 5° C
AC Supply:	230V/50Hz
Fan Mode:	Regulated Fan Speed
Fixture Warm-up Time:	30 minutes

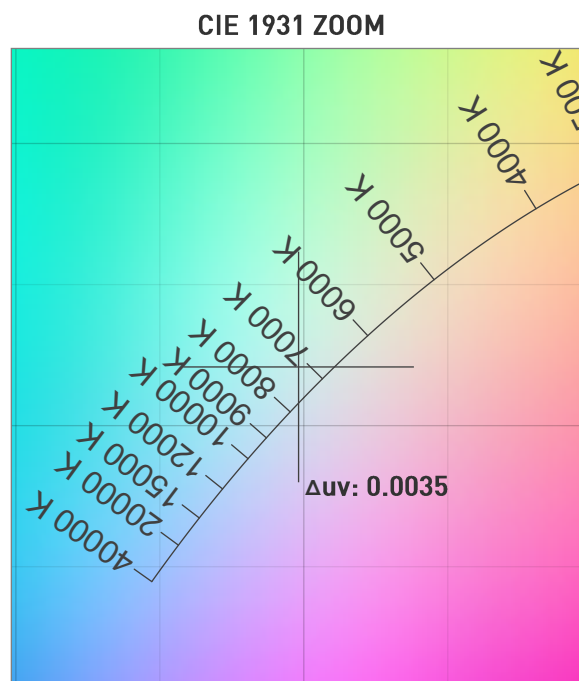
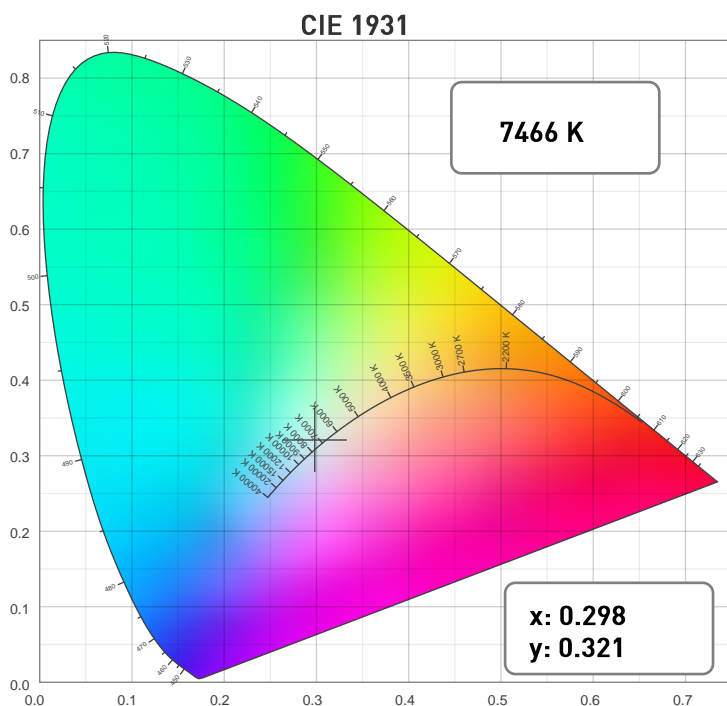
SPECTRAL DISTRIBUTION



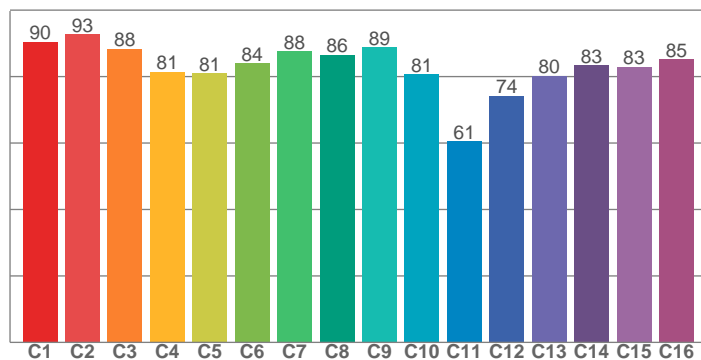
# Photometric Report

VDO Atomic Bold – Beam - 60 Deg Diffuser

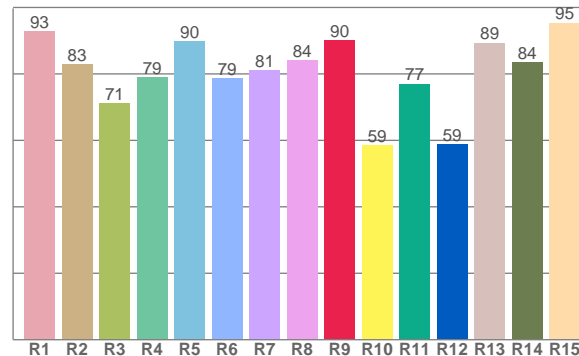
## CHROMATICITY



**TM30: 83.4**



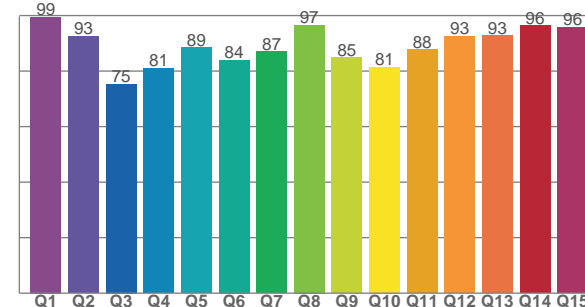
**CRI: 82.5 (R1-R8)**



## COLOR PARAMETERS

Color Temperature	Color Rendering Index	Red Component	Color Fidelity	Color Gamut
CCT	CRI	CRI R9	TM30 Rf	TM30 Rg
7466 K	82.5	90.1	83.4	105.2

**CQS: 87.2**



Television Lighting Consistency Index	Color Quality Scale	Color Coordinate CIE 1931	Color Coordinate CIE 1931	Color Coordinate CIE 1964	Color Coordinate CIE 1964	Color Deviation from Black Body
TLCI	CQS	x	y	u	v	$\Delta uv$
85	87.2	0.298	0.321	0.191	0.308	0.0035

# Photometric Report

VDO Atomic Bold – Beam - 60 Deg Diffuser

TM30

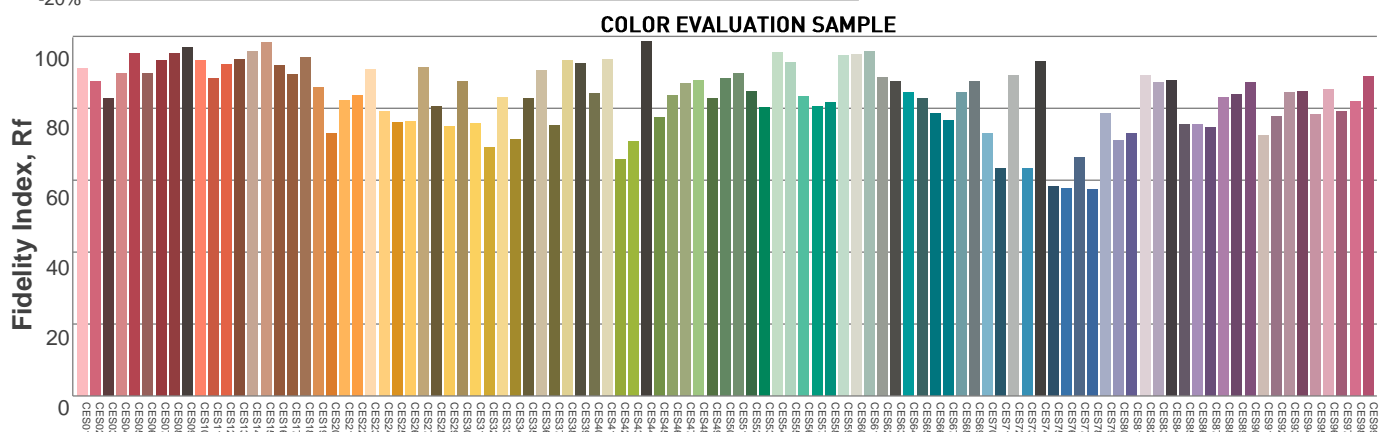
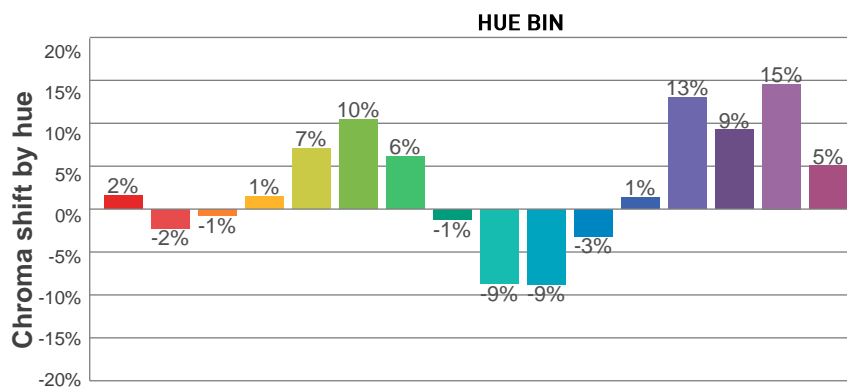
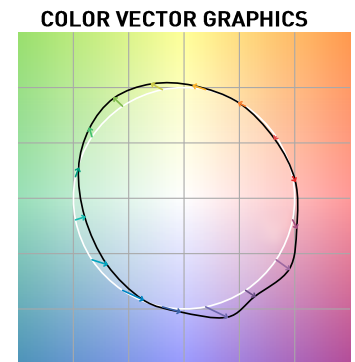
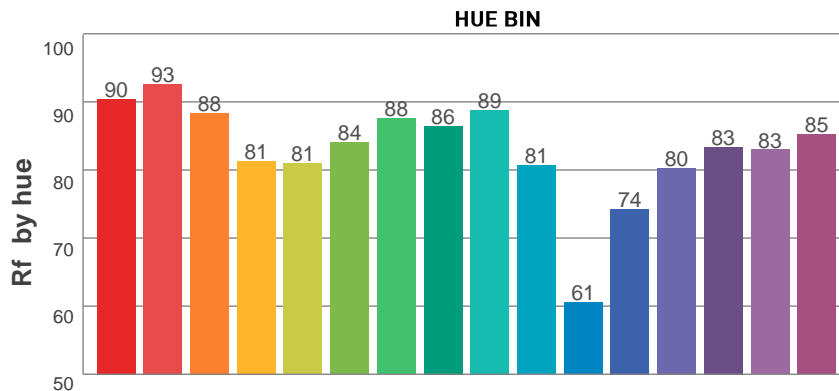
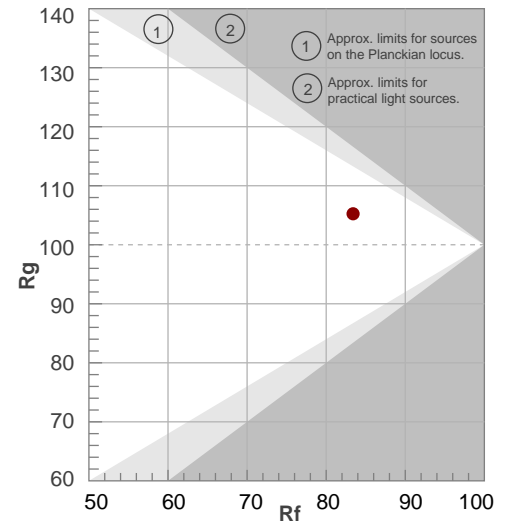
**Rf 83.4**

Fidelity index Rf

**Rg 105.2**

Gamut index Rg

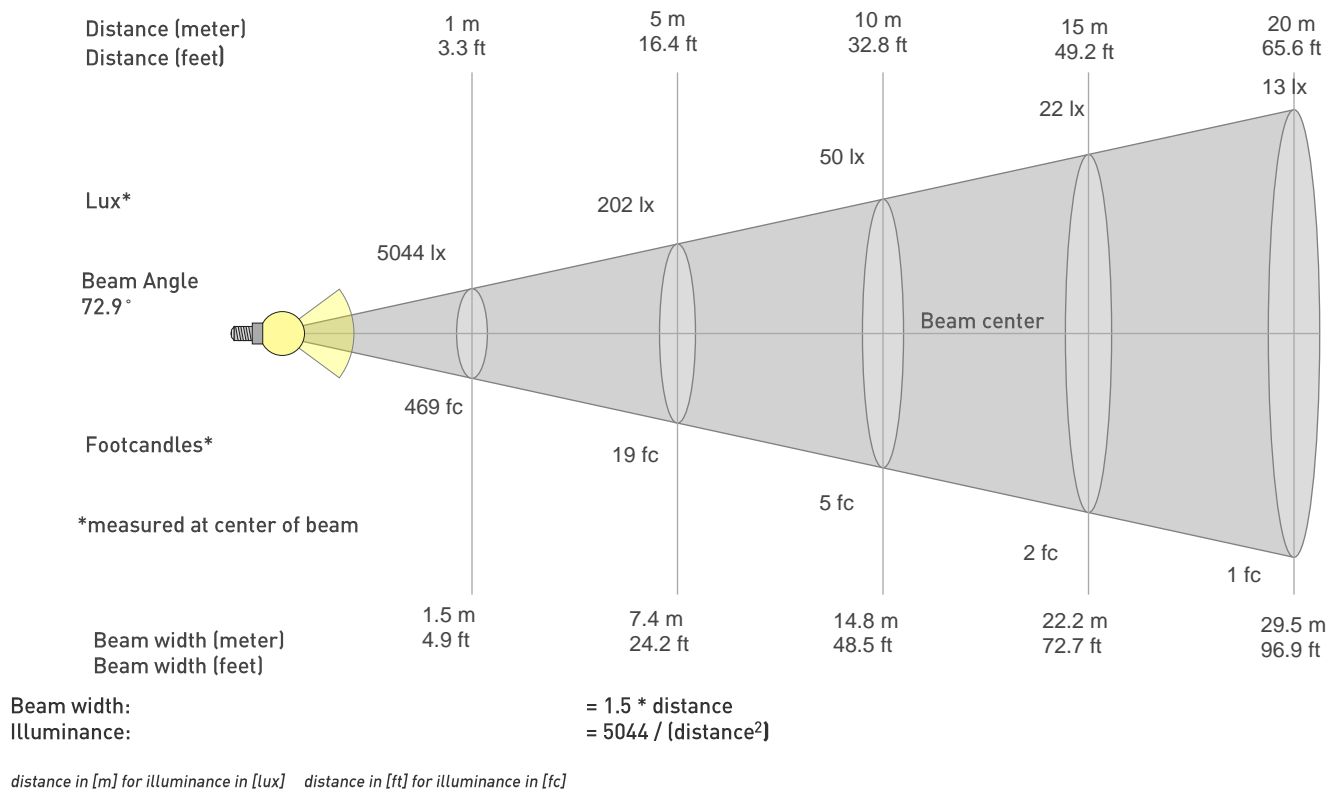
Hue Bin	R <sub>f</sub>	Graphic shifts (%)	
		Chroma	Hue
1	90	2%	-4%
2	93	-2%	-1%
3	88	-1%	7%
4	81	1%	11%
5	81	7%	9%
6	84	10%	2%
7	88	6%	-5%
8	86	-1%	-8%
9	89	-9%	-1%
10	81	-9%	11%
11	61	-3%	20%
12	74	1%	16%
13	80	13%	17%
14	83	9%	4%
15	83	15%	0%
16	85	5%	-6%



# Photometric Report

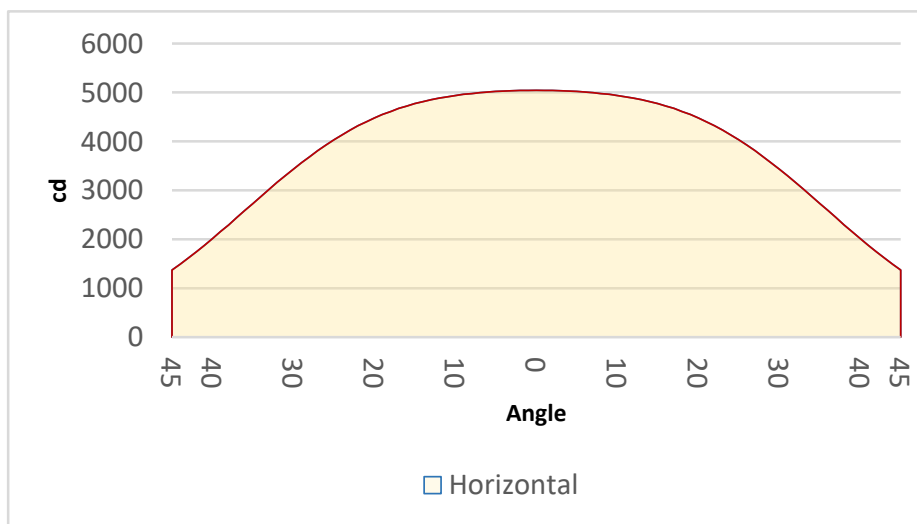
## VDO Atomic Bold – Beam - 60 Deg Diffuser

### BEAM DETAILS



### BEAM ILLUMINANCE FROM 1-20M

1m	2m	3m	4m	5m	6m	7m	8m	9m	10m	11m	12m	13m	14m	15m	16m	17m	18m	19m	20m
3.3ft	6.6ft	9.8ft	13.1ft	16.4ft	19.7ft	23ft	26.2ft	29.5ft	32.8ft	36.1ft	39.4ft	42.7ft	45.9ft	49.2ft	52.5ft	55.8ft	59.1ft	62.3ft	65.6ft
5044lx	1261lx	560lx	315lx	202lx	140lx	103lx	79lx	62lx	50lx	42lx	35lx	30lx	26lx	22lx	20lx	17lx	16lx	14lx	13lx
468.6fc	117.1fc	52.1fc	29.3fc	18.7fc	13fc	9.6fc	7.3fc	5.8fc	4.7fc	3.9fc	3.3fc	2.8fc	2.4fc	2.1fc	1.8fc	1.6fc	1.4fc	1.3fc	1.2fc



BEAM ANGLE 50%	FIELD ANGLE 10%	CUTOFF ANGLE 3%
72.9°	111.9°	145.5°